



# STÓ:LŌ BULLETIN

News, Upcoming Events, and Postings

July 4, 2018

VALUE OF THE WEEK

## ACCOUNTABILITY

We Accept Responsibility for Our Decisions and Actions and Answer to Our Partners in An Open and Transparent Way.

### NEW

Please email any entries for the bulletin to [Brianna.Nakagawa@stolonation.bc.ca](mailto:Brianna.Nakagawa@stolonation.bc.ca)

### **STÓ:LŌ SERVICE AGENCY EMPLOYMENT OPPORTUNITY**

PRRO Referral Officer

*Closes July 13, 2018*

The Referral Officer works, communicates, and coordinates with other PRRO staff including the Referrals Administrator, other Referral Officers, the GIS Analyst, and external specialists as required. The activities of the Referral Officer are supervised through PRRO Co-Managers. The Referral Officer manages their caseload primarily through Stó:lō Connect, which is used as a communications, analysis, reporting, and tracking tool. The Referral Officer performs other related tasks as directed by supervisor.

[VIEW MORE HERE](#)

### **SEABIRD ISLAND JUNIOR KINDERGARTEN**

Do you wish your child to learn in a culturally rich literacy environment?

Join us for Junior Kindergarten at Seabird Island Community School!

For More Information

Contact Seabird Island Community School

Principal: Barbara White

Phone: 604-796-2177

Email: [barbara@seabirdisland.ca](mailto:barbara@seabirdisland.ca)

[VIEW MORE HERE](#)

### **STÓ:LŌ XWEXWILMEXW TREATY ASSOCIATION COMMUNITY UPDATES**

*July 9, 2018, July 19, 2018, July 30, 2018*

FOR MEMBERS OF:

- Athelets (Aitchelitz),
- Leq'á:mél,
- Sw'ewqéyl (Skowkale),
- Yaqwyeqwi:ws (Yakweakwioose),
- Ch'iyáqtel (Tzeachten)
- Sq'ewá:lxw (Skawahlook)

[VIEW MORE HERE](#)



## CHILDREN'S FESTIVAL

Stó:lō Service Agency Presents

# The 26<sup>th</sup> Anniversary Children's Festival

The Battle for the House Cup



Wednesday, July 11, 2018  
9:30am – 2:30pm

Stolo Nation – 7201 Vedder Road – Chilliwack

Midway Games | Colouring Contest | Bouncy Castles |  
Popcorn | Stahal Tournament | Prizes | Stolo's Got  
Talent | Food Truck Lunch | More



# Stó:lō's Got Talent

July 11, 2018 – 1:00PM

1<sup>ST</sup>, 2<sup>ND</sup> & 3<sup>RD</sup> PLACE PRIZES

**YOU MUST PRE-REGISTER**

MUST BE 15 YEARS OF AGE OR YOUNGER

CONTACT DANYA DOUGLAS OR JENNIFER MCDONALD FOR MORE INFORMATION

PHONE: 1-877-411-3200 OR 604-824-3200

EMAIL COMPLETED REGISTRATIONS TO:  
[EVENTS@STOLONATION.BC.CA](mailto:EVENTS@STOLONATION.BC.CA)



REGISTER YOUR KIDS HERE

BUY YOUR 2018 CF SHIRT HERE

## NOW AVAILABLE IN THE GIFT SHOP



\$20.00 FOR ADULTSIZING

\$15.00 FOR YOUTH SIZING

OPEN MONDAY TO SATURDAY  
9:30AM – 4:30PM

7201 VEDDER ROAD  
CHILLIWACK, BC



SIGN UP FOR STÓ:LŌ'S GOT TALENT HERE

MORE INFORMATION ABOUT THE EVENT HERE



## THIS WEEK

### EVENTS BY STÓ:LŌ BUSINESS ASSOCIATION

#### LETSE Q'ÉP 2018

*July 5, 2018*

Come out for our 2nd Letse Q'ép of 2018. This is your chance to network with other SBA Members, learn about inclusive programs and Member Benefits.

Tonight we are welcoming new Members and three businesses will be highlighted. Showcased businesses this month are:

- Spapium "Little Prairie" Farm
- Sasquatch Crossing Eco Lodge
- Great River Fishing Adventure

For inquiries please contact Alena McInroy at (604)824-5276 or

[sbavoice@gmail.com](mailto:sbavoice@gmail.com)

[VIEW MORE HERE](#)





## JOBS & TRAINING

### STÓ:LŌ SERVICE AGENCY EMPLOYMENT OPPORTUNITIES

#### O.P.E.N OPIOID PREVENTION AND EDUCATION NETWORK) WORKER

*OPEN UNTIL FILLED WITH QUALIFIED CANDIDATE*

The Key Results Areas, in addition to providing linkages between the Overdose Community Action Team working groups and service providers, include: Hidden Population – Indigenous Women, Hidden Population – Trades and Cultural Safety. It is imperative that the work is done through a harm reduction lens and delivered through trauma-informed care. It is also essential that the worker participate in Historical Impacts training and conduct themselves with cultural safety and humility.

[VIEW MORE HERE](#)

### STÓ:LŌ ABORIGINAL SKILLS AND EMPLOYMENT TRAINING PROGRAM

#### CULINARY ARTS PRE-TRADE PROGRAM

*Class Date: September 10, 2018*

For more information contact your Employment counsellor to complete the SASET Culinary Arts application package

[VIEW MORE HERE](#)

## FUNDRAISING

# WIN BIG



STÓ:LŌ SERVICE AGENCY

## \$5,000 CASH

**SUPPORT THE YOUTH MENTORSHIP PROGRAM**

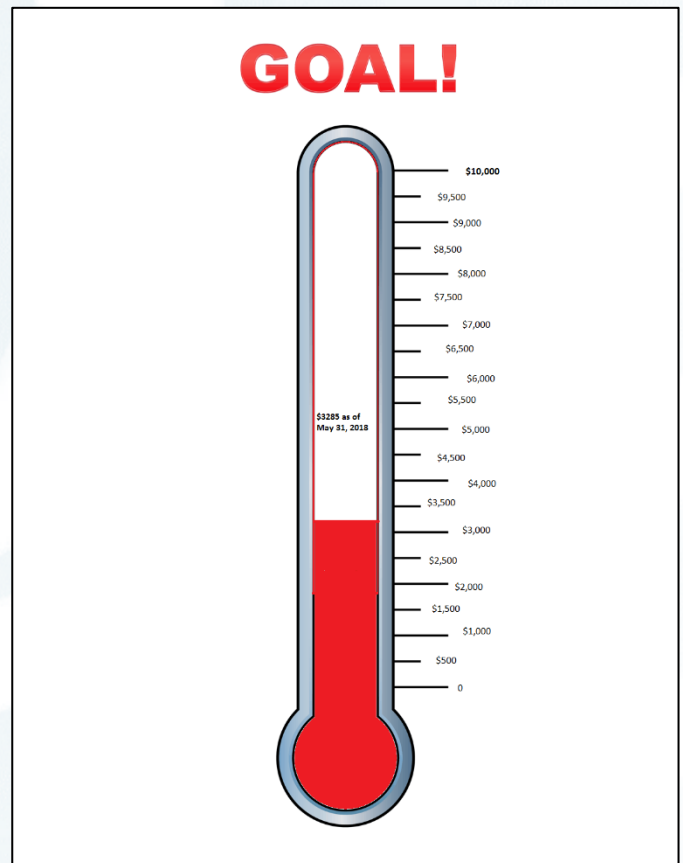
**DRAWING**  
Draw to be held after \$10,000 in tickets have been sold.  
Half (\$5,000) to the winner, half (\$5,000) to Youth Mentorship.

**BUYING TICKETS**  
In Person  
7201 Vedder Road,  
Chilliwack at Building 7  
or the Stó:lō Gift Shop

**CONTACT**  
**MICHAEL SUEDFELD**  
Michael.Suedfeld@stolonation.bc.ca  
or  
**SAMANTHA KAJI**  
Samantha.Kaji@stolonation.bc.ca

**TICKETS**  
**\$5 Each or \$20 for 5**  
Ticket holders do not have to be present to win. Winner will be contacted.

Proceeds from this coffee benefit the Stó:lō Service Agency Youth Mentorship Program. There will be one cash prize equal to \$5,000.00. BC Gaming License #101654. If gambling is a problem for you or someone in your family, call 1-855-795-6111.





## IN THE COMMUNITY

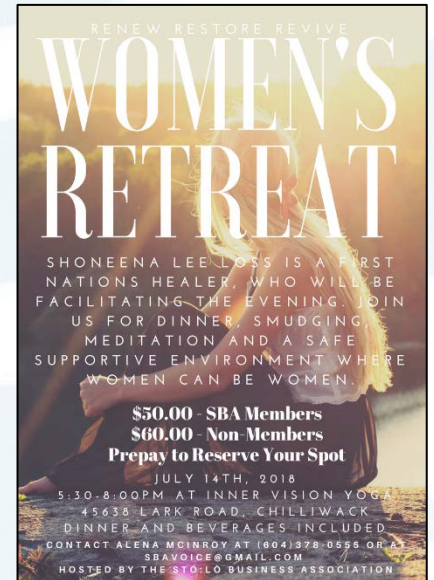
### EVENTS BY STÓ:LŌ BUSINESS ASSOCIATION

#### WOMEN'S RETREAT

July 14, 2018

The Women's Retreat, hosted by Stó:lō Business Association, will be facilitated by Shoneena Lee Loss who is an experienced First Nations healer. Join us smudging, meditation and a safe supportive place where women can be women. Dinner and beverages will be provided. Prepay to reserve your seat

[VIEW MORE HERE](#)



#### MEN'S RETREAT

July 21, 2018

The Men's Retreat, hosted by Stó:lō Business Association, is sure to be an experience you won't soon forget. Relax on the peaceful Fraser River fishing for sturgeon with a trained and licensed Fraser River Fishing Adventures guide. Four people per boat and up to 15 boats on the water at once. Lunch and beverages are included in the price. Prepay to reserve your seat.

[VIEW MORE HERE](#)

### STÓ:LŌ BUSINESS TRADESHOW

November 2018

The Stó:lō Business Tradeshow is the 2nd major bi-annual Indigenous business event to promote the strength and magnitude of the diverse Indigenous business economy in S'olh Téméxw, the Stó:lō Traditional Territory. For more information on being an exhibitor please contact Alena McInroy at sbavoic@gmail.com or (604)824-5276.

[VIEW MORE HERE](#)





## A:IMELHAWTXW EARLY EDUCATION CENTRE

We have some great activities planned throughout the month of July 2018.

Please view the newsletter/calendar or A:Imelhawtxw Facebook Page for more details.

Outreach sessions are available for some one on one time with one of our Head start staff. Let's find out how we can best support you and your family. Information we can share with you and your child ages 0-6: printing with your child, Food budgeting, Healthy snacks, Meal planning, crafts and share recipes! Sign-up for a session of fun.

For more information please contact Ashley Crey office (604)-824-6505 or cell (604)-703-4764.

<b>À:Imèlhàwtxw Early Education Centre</b> Sq'eq'ó Mi Tselhxwelmexw—Families Coming Together				
Head Start Room: 604-824-3294 Administration Office : 604-824-6505		July 2018 <b>Family Program Calendar</b>	Bus Driver: 604-795-0596 Van Driver: 604.795.0848	
Monday Yelá:welhat	Tuesday Sthé melts	Wednesday Sihi:xws	Thursday Sxe'óthels	Friday Sihqátses
<b>Centre Closed</b>  	Family Program 9:30am-12:00pm Outreach 1:00pm—3:00pm	<b>No Family Program</b>	<a href="#">Field Trip-Zoo</a> 9:30am-2:30pm Outreach 1:00pm—3:00pm	<b>No Family Program</b>  
<b>Vedder River Walk</b> (9-11 Off Site) Family Program 1:00pm-3:30pm	Family Program 9:30am-12:00pm Outreach 1:00pm—3:00pm	<b>Centre Closed</b> <b>Children's Festival</b> (9:30-2:30)  	<b>5210</b> Every Day! <small>HEALTHY HABITS FOR HEALTHY COMMUNITIES</small> 9:30am-12:00pm Outreach 1:00pm—3:00pm	Family Program 9:30am-12:00pm
<b>Berry Picking</b> (9-11 Off Site) <b>49350 Prairie Central Rd.</b> <b>Make-In-Take</b> 1:00pm-3:30pm	<b>Make-In-Take Bannock</b> 9:30am-12:00pm Outreach 1:00pm—3:00pm	<b>Fairfield Gwynne Vaughan Park</b> (9-11) Family Program 1:00pm-3:30pm	<b>LIVE 5210</b> 9:30am-12:00pm Outreach 1:00pm—3:00pm  	Family Program 9:30am-12:00pm
<b>Blue Heron Reserve</b> (9-11 Off Site) Family Program 1:00pm-3:30pm	<b>Sun Safety</b> 9:30am-12:00pm Outreach 1:00pm—3:00pm	<b>leisure Centre Water Park</b> (9-11 downtown) Family Program 1:00pm-3:30pm	<b>LIVE 5210</b> 9:30am-12:00pm Outreach 1:00pm—3:00pm	Family Program 9:30am-12:00pm
<b>Cultus Lake Main Beach</b> (9-11 Off Site) Family Program 1:00pm-3:30pm	Family Program 9:30am-12:00pm Outreach 1:00pm—3:00pm			

**À:Imèlhàwtxw Early Education Centre**  
**Family Program Newsletter**  
 July 2018

**Theme: Water Play and Summer**  
 #9-7201 Vedder Road, Chilliwack B.C. V2R 4G5

**Outreach**  
Some information we can share with you and your child ages 0-6:

**Food Budgeting  
Healthy Snacks  
Meal Planning  
Crafts/Science  
Share recipes  
Summer Activities**

Light snack and transportation is provided.

**Time:** 1:00pm—4:00pm  
**Location:** Head Start Program  
Tuesdays & Thursdays

Sign-up is required to make sure we have resources on hand to best support you and your family!

**Dates to Remember**

During July & August please view our head start calendar for our extended program days. Enjoy community outings and walks!

July 5<sup>th</sup>– [Field Trip](#) to the Vancouver Zoo from 9:30am-2:30pm.  
**Sign up required. Space limited! Please keep in mind attendance has to be 4 times within the current or previous month!**

July 11<sup>th</sup>. Children's Festival **Centre Closed**. Bus transportation available, please register & sign up with head start staff. **(Event from 9:30-2:30)**

July 12<sup>th</sup>, 19<sup>th</sup> & 26<sup>th</sup> – Join us for LIVE 5210. Great tips to being active outdoors and healthy snacks!

July 24<sup>th</sup>. Please welcome Trina (SSA) to come share info about **sun safety!**

**Temqwá:l- mosquito time**

Temkw'ó:kw'cs-  
Time when things are hot

**Important News**

Head start Drop-In has a Max capacity setting of 30 people. Should we reach this number a sign will be posted on the door. Please feel free to utilize outreach.

**Upcoming Dates**

**August 6<sup>th</sup>**- Centre Closed for BC Day  
**August 31<sup>st</sup>**- No Family Program

# JULY

SUNDAY	MONDAY	TUESDAY	WEDNESDAY	THURSDAY	FRIDAY	SATURDAY
1	2 CANADA DAY STAT HOLIDAY	3	4	5	6	7
8	9 SACRED TREE SUPPORT GROUP 5:30PM - 6:30PM Bldg10 Elder's Lounge SXTA COMMUNITY UPDATES Bldg 10	10	11 STÓ:LŌ CHILDREN'S FESTIVAL 9:30AM - 2:30PM COQUALEETZA	12	13	14
15	16 SACRED TREE SUPPORT GROUP 5:30PM - 6:30PM Building 10 Elder's Lounge	17	18	19 Stó:lō Nation AGM Building 8B - G110 9:00am - 4:00pm  SXTA COMMUNITY UPDATES Sq'ewā:lxw Hall	20	21
22	23 SACRED TREE SUPPORT GROUP 5:30PM - 6:30PM Building 10 Elder's Lounge	24	25	26	27	28
29	30 SACRED TREE SUPPORT GROUP 5:30PM - 6:30PM Bldg10 Elder's Lounge SXTA COMMUNITY UPDATES Leq'á:mel Gymnasium	31				

# AUGUST

SUNDAY	MONDAY	TUESDAY	WEDNESDAY	THURSDAY	FRIDAY	SATURDAY
			1	2	3	4
5	6 BC DAY STAT HOLIDAY	7	8	9 KIDS IN THE HALL Skowkale Hall	10	11
12	13 SACRED TREE SUPPORT GROUP 5:30PM - 6:30PM Building 10 Elder's Lounge	14	15	16	17	18
19	20 SACRED TREE SUPPORT GROUP 5:30PM - 6:30PM Building 10 Elder's Lounge	21	22	23 STÓ:LŌ GOLF TOURNAMENT CULTUS LAKE	24	25
26	27 SACRED TREE SUPPORT GROUP 5:30PM - 6:30PM Building 10 Elder's Lounge	28	29	30	31	





## OUR VISION AND MISSION

### VISION

A healthier, stronger, brighter future for all communities.

### MISSION

We empower, support and contribute to the health and well-being of all people by providing leadership and delivering a broad range of quality services.

### VALUES

We strive to act in accordance with our seven core values at all times.

#### HONESTY

We Communicate Internally and Externally with Clarity, Honesty and Openness.

#### ACCOUNTABILITY

We Accept Responsibility for Our Decisions and Actions and Answer to Our Partners in An Open and Transparent Way.

#### PRIDE

We Feel and Demonstrate Pride in Our Actions and Accomplishments

#### PROFESSIONALISM

We Act Professionally as An Outward Reflection of Our Internal Values.

#### INTEGRITY

We Do Our Best Work, Hold Ourselves to The Highest Standards of Conduct and Act in The Interest of Our Communities and Partners.

#### EMPATHY

We Work to Understand and Relate to The Feelings, Experiences and Situations of Others and Are Non-Judgmental.

#### RESPECT

We Respect Others' Ideas, Experiences and Ways of Thinking and Treat All People as Equals.



## HEALTH

### SACRED TREE SUPPORT GROUP

Every Monday from 5:30pm – 6:30pm

The Sacred Tree Support Group is a supportive environment for people living in recovery to meet. It is on Monday evenings (except holidays) at Building 10 Elders Room. There will be a 12 Step refresher at least 2 times throughout the year due to requests.

This program has the same anonymity foundation as other recovery programs such as AA or NA or Day Treatment. Everyone is welcome.

[VIEW MORE HERE](#)

### Sacred Tree Support Group

**SUPPORTIVE SPACE FOR PEOPLE LIVING IN RECOVERY**  
Develop new contacts and positive supports through sharing

**EVERY MONDAY EVENING 5:30 PM – 6:30 PM**  
**STARTING APRIL 16TH 2018**  
Building 10 - Sto:lo Nation #10-7201 Vedder Road, Chilliwack

**Shwet'amietse! Presents:**

## Kids in the Hall

**Everyone Welcome**

Thursday August 9th @  
Skowkale Hall 7686  
Chilliwack River Rd, 11-1 pm

**GREAT DOOR PRIZES**

**LITERACY EVENT FOR KIDS!**

- Light Lunch Provided
- Guest Storyteller
- Children's Activities
- New book to each child

Presented by Sto:lo Nation Aboriginal Supported Child and Infant Development Program. Books donated by First Books Canada. For more information email tamara.kelly@stolonation.bc.ca

### KIDS IN THE HALL

August 9, 2018

Literacy Event for kids | Lunch Provided | Guest Storyteller | Children's Activities | New Books

For More Information Contact Tamara Kelly at:

[tamara.kelly@stolonation.bc.ca](mailto:tamara.kelly@stolonation.bc.ca)

[VIEW MORE HERE](#)

### ABORIGINAL FAMILY PLACE

Please join us at Aboriginal Family Place located in Mission for our parent participation program, parent sessions and family night. We also offer outreach time as well as provide free transportation.

### June 2018

**Outreach**

We offer one on one support Monday and Wednesday afternoons from 1-3pm

**What is Outreach?**

This is a time to focus on you and your child's specific needs.

Do you need help accessing resources or getting to an appointment?

Would you like one on one time for your child?

Appointment required for outreach

**Important Dates to Remember**

Friday, June 8<sup>th</sup> - Mission water park. Please join us for a day in the sun. 10am - 1pm. (Weather permitting)

Monday June 11<sup>th</sup> to Friday June 15<sup>th</sup> - Moosehide meeting with Brenda Seymour (Ms. Mary's mom) Brenda will be with us all week to teach us how to make our own pair of moccasins. Sign up is required and you must attend every session to ensure you have enough time to finish them.

Wednesday June 20<sup>th</sup> - National Aboriginal Day story time at the Mission Library. 10:30am - 11:00am. Transportation is available. After the story time we will be returning to St. Mary's for regular program.

Thursday June 21<sup>st</sup> - We are closed for National Aboriginal Day.

Tuesday June 26<sup>th</sup> - Please join us for Family Night from 4-6. We will be heading to Abbotsford to Galaxy Bowl for a pizza dinner and bowling. Sign up is required and transportation is available.

Wednesday June 27<sup>th</sup> - Friday June 29<sup>th</sup> - Program will be closed.

\*\* We offer free outings/trips and a Family Night every month as a bonus to our regular programs. If you would like to attend these events, we ask that you be a registered and regular attending Family Aboriginal Family Place.\*\*

**Reminders**

Please keep near to your child at all times. We are a parent participation program so we kindly ask that you join in and support your child/children with all activities they decide to engage in. Please encourage safe play through appropriate use of materials and space. Examples: Enjoy your snack sitting at the table/ use gentle hands and washing feet/nose/hair/trimming for outside. This will ensure safety and make program enjoyable for everyone that attends our programs.

Please keep cell phone use to a minimum, we would like to see parents/caregivers engage with their children.

Our programs are for Aboriginal Children 0-6 years old and their families.

Please keep all personal toys at home

We will be offering a light snack and lunch on Family Program days and a snack on Parent Session days.

### ~Aboriginal Family Place~

June 2018 Calendar

Monday Yellowknife	Tuesday Sixth month	Wednesday Sixteen	Thursday Six/October	Friday Six/eleven
				1 Family Program 10am-1pm
4 Family Program 10am-1pm Outreach 1-3pm	5 Parent Session 10am-1pm Painting	6 Family Program 10am-1pm Outreach 1-3pm	7 No Mission program Abby 9:30-12:30pm	8 Family Program 10am-1pm Moccasin Making Patch
11 Family Program 10am-1pm Moccasin Making Day 1	12 Parent Session 10am-1pm Moccasin Making Day 2	13 Family Program 10am-1pm Moccasin Making Day 3	14 Parent Session 10am-1pm Moccasin Making Day 4	15 Family Program 10am-1pm Moccasin Making Day 5
18 Family Program 10am-1pm Outreach 1-3pm	19 Parent Session 10am-1pm DIY Book Swap	20 National Aboriginal Day Story Time at the Library 10:30am-11am Outreach 1-3pm	21 National Aboriginal Day CLOSED	22 Family Program 10am-1pm
25 Family Program 10am-1pm Outreach 1-3pm	26 Family Night 4-6 Bowling	27 PROGRAM CLOSED	28 PROGRAM CLOSED	29 PROGRAM CLOSED

Family Program: Able to see our parent participation program which includes our circle time play, book and other fun!  
 Parent Session: Programs and/or the parent group dinner (optional). APAPS make a lunch, but involves a good meal!  
 Family Night: Celebrate with parents and families through their connections and share the activities. Sign up required!  
 Outreach: One on one time with families, including an appointment with staff. Sto:lo ASU staff members assist our most vulnerable.

We are located at St. Mary's Center 34110 Loughheed Hwy, Mission BC  
(located above the camp and to the left of the shelter)

Office# 604-820-4693 Bus Phone# 604-302-2566 Cell# 604-997-5984

WE PROVIDE FREE TRANSPORTATION TO PROGRAM, CALL US IF YOU NEED A RIDE